



K.L.E.SOCIETY'S
S.V.S. BELLUBBI ARTS & COMMERCE COLLEGE SAUNDATTI - 591126
DISTRICT: BELAGAVI STATE: KARNATAKA
3rd Cycle Re-Accredited at the B++ Level by NAAC

Phone: 08330-222311, 222511
 Fax: 08330-223716

E-mail: klesvbellubbicollege@gmail.com
 Website: www.klesvsbcs.edu.in

Feedback from Faculty on Curriculum 2020-21

SL. NO	Questionnaires	Faculty Response					Total (N)	Weighted Response					Sum of Weight AGE (Erw)	Score (Erw/n)
		4	3	2	1	0		4	3	2	1	0		
1	How do you rate the Relevance of the topics to the Industry	12	1	2	0	0	15	48	3	4	0	0	55	3.7
2	How best the electives offered in the curriculum is in relation to the technological advancements	12	1	1	1	0	15	48	3	2	1	0	54	3.6
3	How do you rate the practical exposure regarding modern tools covered by the syllabus	13	0	2	0	0	15	52	0	4	0	0	56	3.7
4	Rate the capability of the curriculum for improving ethical values in students	14	1	0	0	0	15	56	3	0	0	0	59	3.9
5	How do you rate the role of curriculum in encourages Industry – Academic Interactions	12	0	2	1	0	15	48	0	4	1	0	53	3.5
6	How do you rate the academic Flexibility in the curriculum	11	1	3	0	0	15	44	3	6	0	0	53	3.5
7	How do you rate the curriculum effectiveness to improve innovative thinking?	10	1	3	1	0	15	40	3	6	1	0	50	3.3
8	How do you rate the role curriculum in improving teamwork abilities?	12	3	0	0	0	15	48	9	0	0	0	57	3.8
9	How do you rate the syllabus effectiveness for development of entrepreneurship?	12	1	1	1	0	15	48	3	2	1	0	54	3.6
10	Rate the curriculum effective for the development of communication skills	13	2	0	0	0	15	52	6	0	0	0	58	3.9
Total												36.6		
Result												3.7		



gsh
PRINCIPAL
 K.L.E. Society's S.V.S. Bellubbi
 Arts & Com College, Saundatti



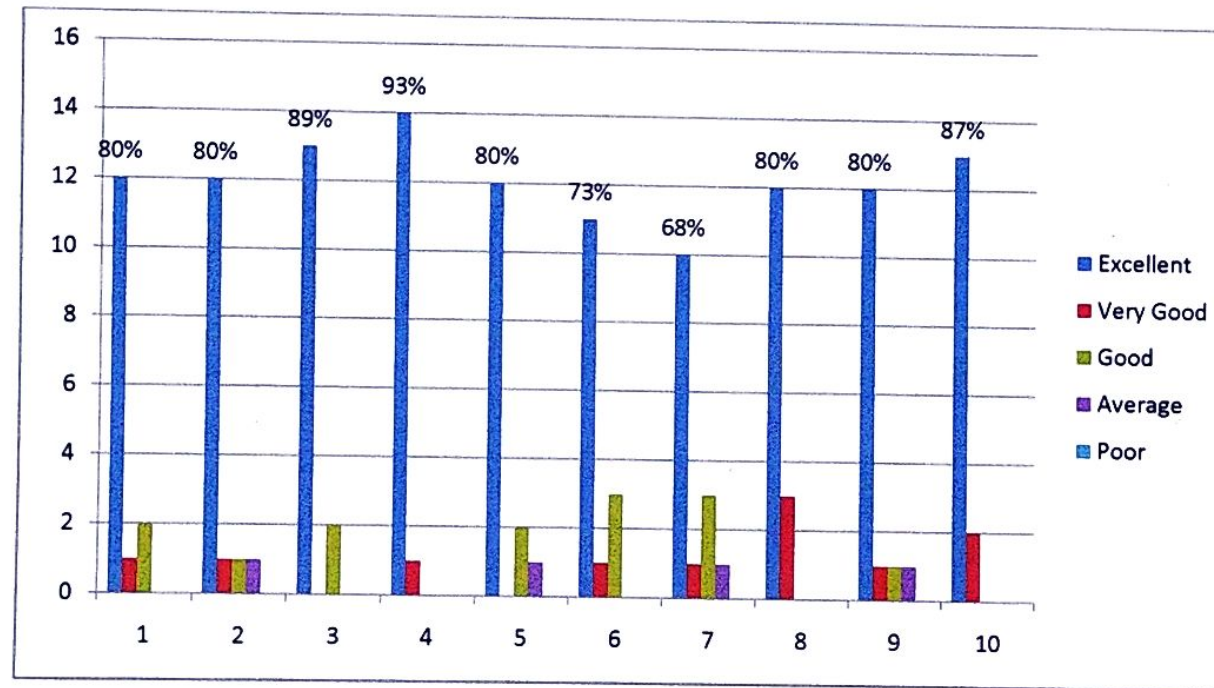
K.L.E.SOCIETY'S
S.V.S. BELLUBBI ARTS & COMMERCE COLLEGE SAUNDATTI - 591126
DISTRICT: BELAGAVI STATE: KARNATAKA
3rd Cycle Re-Accredited at the B++ Level by NAAC

Phone: 08330-222311, 222511
Fax: 08330-223716

E-mail: klesvsbellubbicollege@gmail.com
Website: www.klesvsbcs.edu.in

Feedback from Faculty on Curriculum 2020-21

Faculty Response



Questionnaires



PRINCIPAL
K.L.E.Society's S.V.S.Bellubbi
Arts & Com College, Saundatti.



K.L.E.SOCIETY'S
S.V.S. BELLUBBI ARTS & COMMERCE COLLEGE SAUNDATTI - 591126
DISTRICT: BELAGAVI STATE: KARNATAKA
3rd Cycle Re-Accredited at the B++ Level by NAAC

Phone: 08330-222311, 222511

Fax: 08330-223716

E-mail: klesvsbellubbicollege@gmail.com

Website: www.klesvsbcs.edu.in

Feedback from Students on Curriculum 2020-21

SL.NO	Questionnaires	Students Response					Total (N)	Weighted Response					Sum of Weight AGE (Erw)	Score (Erw/n)
		4	3	2	1	0		4	3	2	1	0		
1	To what extent the structure and appropriateness of curriculum is?	57	1	2	0	0	60	228	3	4	0	0	235	3.9
2	How well the curriculum caters to the industry requirements?	57	1	1	1	0	60	228	3	2	1	0	234	3.9
3	How will you rate the delivery of curriculum with regard to soft skills, managerial skills and programming skills?	54	2	4	0	0	60	216	6	8	0	0	230	3.8
4	How is problem-based learning address through curriculum?	56	4	0	0	0	60	224	12	0	0	0	236	3.9
5	Your rating related to the curriculum dealing with the understanding real time problems?	57	0	2	1	0	60	228	0	4	1	0	233	3.9
6	Is the knowledge of various subjects delivered through curriculum?	56	1	3	0	0	60	224	3	6	0	0	233	3.9
7	How often is the curriculum reviewed?	58	1	0	1	0	60	232	3	0	1	0	236	3.9
8	Is the curriculum relevant to bring awareness related to social, safety, health, legal and cultural issues while solving engineering problems?	57	3	0	0	0	60	228	9	0	0	0	237	4.0
9	How best the curriculum prepares for the academic growth?	56	1	2	1	0	60	224	3	4	1	0	232	3.9
10	Your over all opinion about the design and review of the curriculum	58	2	0	0	0	60	232	6	0	0	0	238	4.0
Total													39.1	
Result													3.9	



PRINCIPAL

K.L.E.Society's S.V.S.Bellubbi
Arts & Com Collage, Saundatti.

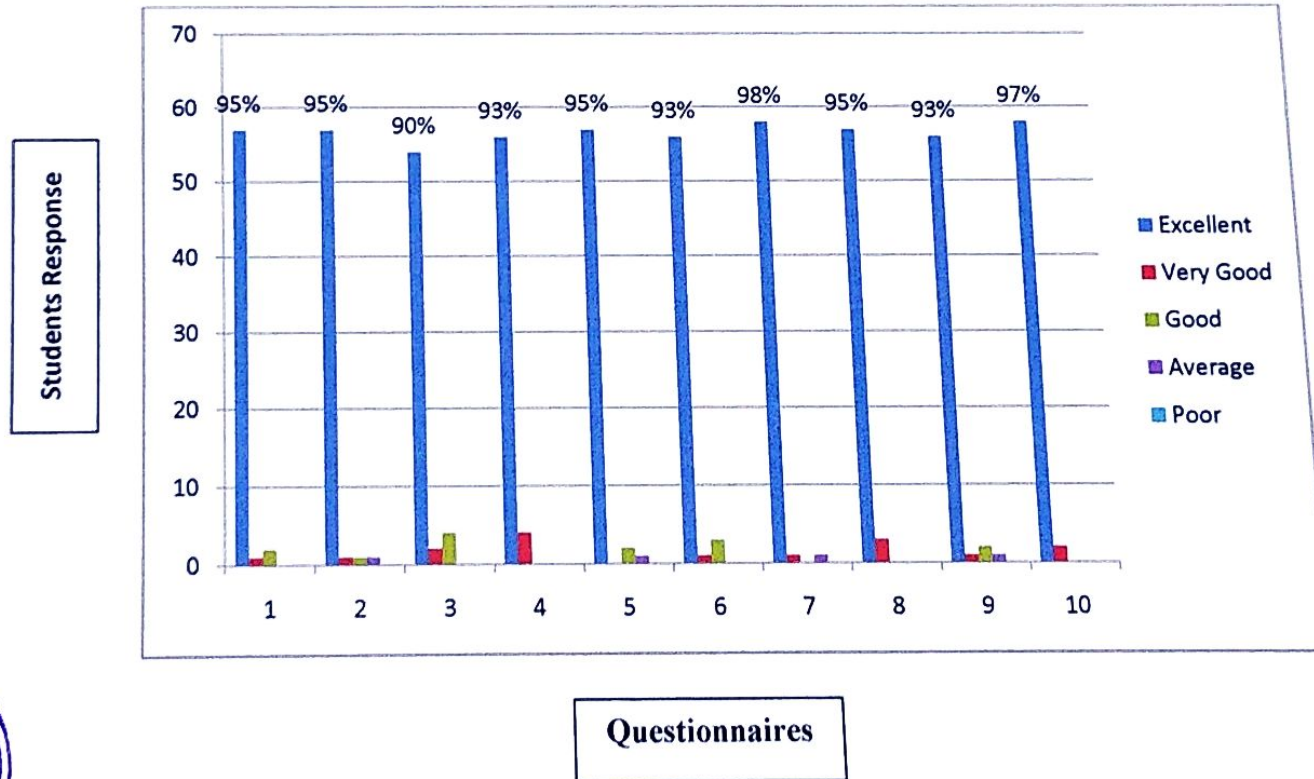


K.L.E.SOCIETY'S
S.V.S. BELLUBBI ARTS & COMMERCE COLLEGE SAUNDATTI - 591126
DISTRICT: BELAGAVI STATE: KARNATAKA
3rd Cycle Re-Accredited at the B++ Level by NAAC

Phone: 08330-222311, 222511
Fax: 08330-223716

E-mail: klesvsbellubbicollege@gmail.com
Website: www.klesvsbcs.edu.in

Feedback from Students on Curriculum 2020-21



[Signature]
PRINCIPAL
K.L.E.Society's S.V.S.Bellu
Arts & Com College, Saunda



K.L.E.SOCIETY'S
S.V.S. BELLUBBI ARTS & COMMERCE COLLEGE SAUNDATTI - 591126
DISTRICT: BELAGAVI STATE: KARNATAKA
3rd Cycle Re-Accredited at the B++ Level by NAAC

Phone: 08330-222311, 222511
Fax: 08330-223716

E-mail: klesvsbellubbicollege@gmail.com
Website: www.klesvsbcs.edu.in

Feedback from Employers on Curriculum 2020-21

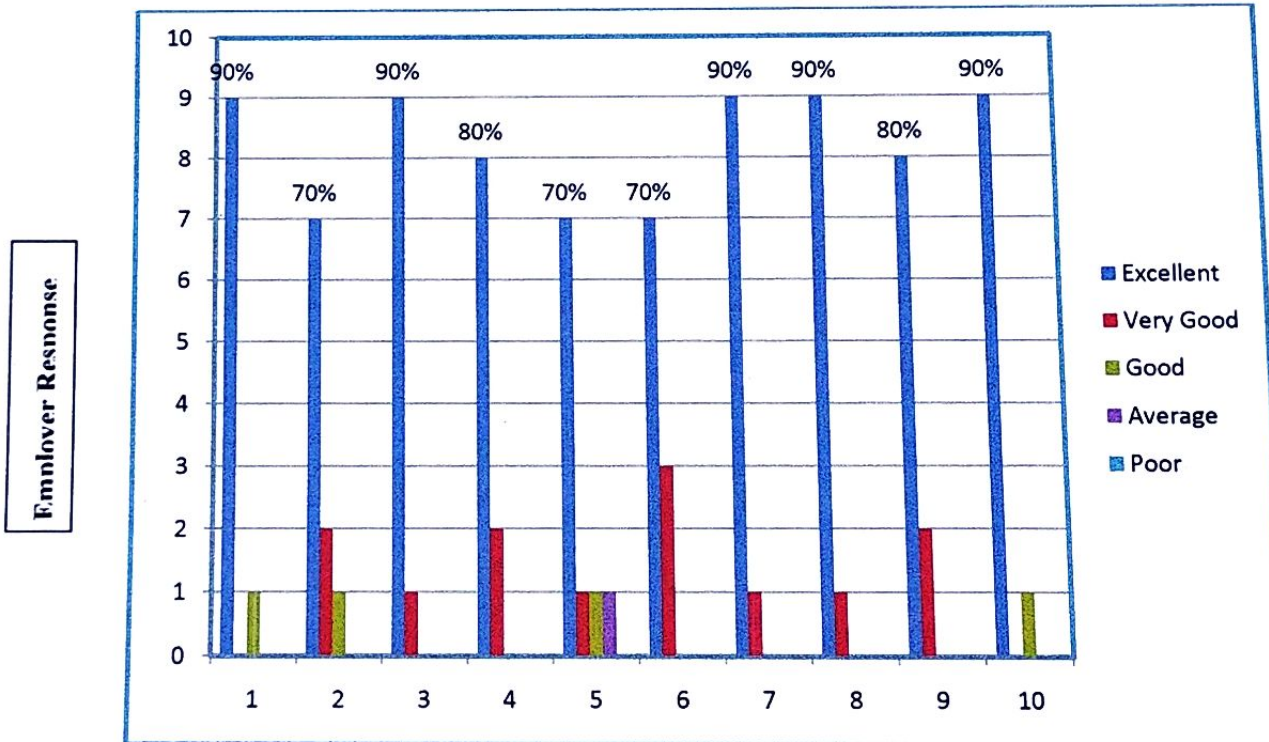
SLNO	Questionnaires	Employer Response					Total (N)	Weighted Response					Sum of Weight AGE (Erw)	Score (Erw/n)
		4	3	2	1	0		4	3	2	1	0		
1	How do you rate relevance of the courses in relation to the program?	9	0	1	0	0	10	36	0	2	0	0	38	3.8
2	How do you rate the sufficiency of the courses related to industry?	7	2	1	0	0	10	28	6	2	0	0	36	3.6
3	How do you rate the competencies/ outcomes in relation to the course content?	9	1	0	0	0	10	36	3	0	0	0	39	3.9
4	How do you rate relevance of the topics to the industry?	8	2	0	0	0	10	32	6	0	0	0	38	3.8
5	Rate the offering of the specialization stream?	7	1	1	1	0	10	28	3	2	1	0	34	3.4
6	How do you rate the applicability of the course ?	7	3	0	0	0	10	28	9	0	0	0	37	3.7
7	How do you rate the experiments in terms of their relevance to the real life application?	9	1	0	0	0	10	36	3	0	0	0	39	3.9
8	How do you rate the proficiency of our students working with you?	9	1	0	0	0	10	36	3	0	0	0	39	3.9
9	Syllabus takes care of knowledge and skill of the students	8	2	0	0	0	10	32	6	0	0	0	38	3.8
10	Ethical professional skills development through Curricular	9	0	1	0	0	10	36	0	2	0	0	38	3.8
Sum of Total													37.6	
Result													3.8	




PRINCIPAL
K.L.E.Society's S.V.S.Bellubbi
Arts & Com College, Saundatti



Feedback from Employers on Curriculum 2020-21




PRINCIPAL
K.L.E. Society's S.V.S. Bellubbi
Arts & Com College, Saundatti



K.L.E.SOCIETY'S
S.V.S. BELLUBBI ARTS & COMMERCE COLLEGE SAUNDATTI - 591126

DISTRICT: BELAGAVI STATE: KARNATAKA

3rd Cycle Re-Accredited at the B++ Level by NAAC

Phone: 08330-222311, 222511

Fax: 08330-223716

E-mail: klesvsbellubbicollege@gmail.com

Website: www.klesvsbcs.edu.in

Feedback from Alumni on Curriculum 2020-21

SL.NO	Questionnaires	Alumni Response					Total (N)	Weighted Response					Sum of Weight AGE (Erw)	Score (Erw/n)
		4	3	2	1	0		4	3	2	1	0		
01	How do you rate the curriculum relevant to your job and future aspirations?	18	1	1	0	0	20	72	3	2	0	0	77	3.9
02	How do you rate the sequence of the courses included in the programs?	16	1	1	2	0	20	64	3	2	2	0	71	3.6
03	How best the curriculum helps you to improve your inter and intrapersonal skills.	16	1	1	2	0	20	64	3	2	2	0	71	3.6
04	How do you rate the structure of syllabus prescribed for the program?	17	1	1	1	0	20	68	3	2	1	0	74	3.7
05	At what extent curriculum is matched to current trends?	17	1	1	1	0	20	68	3	2	1	0	74	3.7
06	How do you rate the availability of materials and references regarding curriculum?	18	1	1	0	0	20	72	3	2	0	0	77	3.9
07	Is Choice Based Credit system being in relation to national and global trends?	19	4	0	1	0	20	76	12	0	1	0	89	3.7
08	Is project work/Internships offered under your program was challenging and constructive?	19	1	0	0	0	20	76	3	0	0	0	79	4.0
09	How best the design of experiments is related to class theory?	18	1	1	0	0	20	72	3	2	0	0	77	3.9
10	How do you rate the experiments in terms of their relevance to the real life application?	19	1	0	0	0	20	76	3	0	0	0	79	4.0
Sum of Total													37.4	
Result													3.7	



[Handwritten Signature]

PRINCIPAL

K.L.E.Society's S.V.S.Bellubbi Arts & Com College, Saundatti

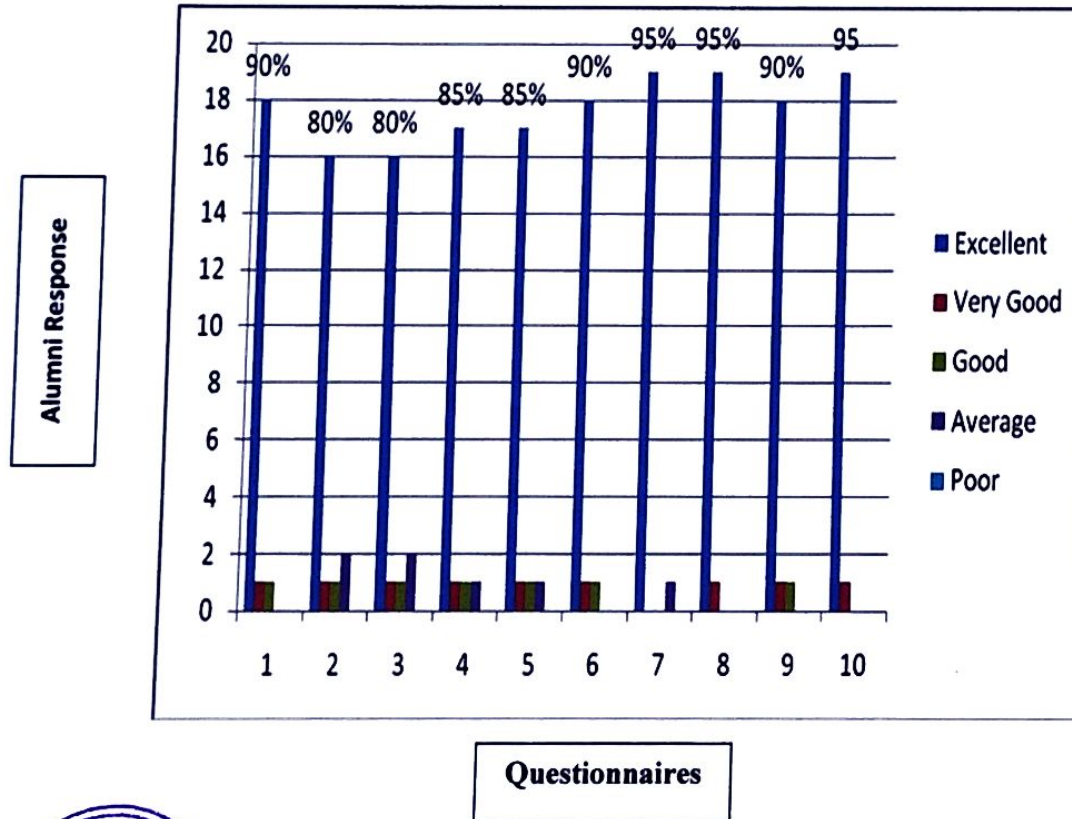


K.L.E.SOCIETY'S
S.V.S. BELLUBBI ARTS & COMMERCE COLLEGE SAUNDATTI - 591126
DISTRICT: BELAGAVI STATE: KARNATAKA
3rd Cycle Re-Accredited at the B++ Level by NAAC

Phone: 08330-222311, 222511
Fax: 08330-223716

E-mail: klesvsbellubbicollege@gmail.com
Website: www.klesvsbcs.edu.in

Feedback from Alumni on Curriculum 2020-21



gaf
PRINCIPAL
K.L.E.Society's S.V.S. Bellubbi
Arts & Com College, Saundatti.